

Boyesen Reeds	337
Carburetor Kits	336
CDI Electronics	338
Fuel Filters	337
Impellers	339
Lower Unit Seal Kits	340
Pistons, Wiseco	334-335
Skegs	340
Spark Plugs	338
Starters	337
Trim Motors	338
Water Separators	337



New York • 1-800-222-3375
631-244-8060 • fax 631-244-0556
61 Floyd Run, Bohemia, NY 11716



Puerto Rico
787-832-2499 • fax 787-832-2939
234 Balboa St., Mayaguez, Puerto Rico 00681-2605
e-mail: info@wsmparts.com • www.wsmparts.com





3117

MODEL	Cyl.	Bore	Piston No.	Ring No.
Suzuki 90Hp 1989-97	4	3.307"/Std.	3202PS (Port)	3307KD
		3.327"/.020	3202SS (Strbd)	
		3.337"/.030	3202P2 (Port)	3327KD
		3.347"/.040	3202S2 (Strbd)	
			3202P3 (Port)	3332KD
			3202S3 (Strbd)	
			3202P4 (Port)	3347KD
		3202S4 (Strbd)		
	Wrist Pin	S650		
	Circlips	CW22		
Suzuki 100hp 1989-00	4	3.307"/Std.	3185PS	3307KD
		3.327"/.020	3185P2	3327KD
		3.337"/.030	3185P3	3332KD
		3.347"/.040	3185P4	3347KD
			Wrist Pin	S6550
	Circlips	CW22		
Suzuki IL 4 115HP 1986-01	4	3.307"/Std.	3185PS	3307KD
		3.327"/.020	3185P2	3327KD
		3.337"/.030	3185P3	3332KD
		3.347"/.040	3185P4	3347KD
			Wrist Pin	S662
	Circlips	CW22		
Suzuki IL 140HP 1986-01	4	3.307"/Std.	3185PS	3307KD
		3.327"/.020	3185P2	3327KD
		3.337"/.030	3185P3	3332KD
		3.347"/.040	3185P4	3347KD
			Wrist Pin	S662
	Circlips	CW22		
Suzuki V6 150SHP "s" 1987-02	6	3.307"/Std.	3186PS (Port)	3307KD
			3186SS (Strbd)	
			3186P2 (Port)	3327KD
			*Requires resleeving	
			3186S2 (Strbd)	
			3186P3 (Port)	3332KD
			3186S3 (Strbd)	
			3186P4 (Port)	3347KD
	3186S4 (Strbd)			
	Wrist Pin	S488		
	Circlips	CW22		



Arizona • 1-800-977-1414

480-966-1550 • fax 480-966-1565

16441 N. 91St. Suite 105 Scottsdale, AZ 85260

e-mail: info@wsmparts.com • www.wsmparts.com

Florida • 1-866-417-4072

941-238-0960 • fax 941-238-0965

6225 21St. E, Suite B, Bradenton, FL 34203





3117

MODEL	Cyl.	Bore	Piston No.	Ring No.
Suzuki V6 150HP 1987-02	6	3.307"/Std.	3117PS (Port)	3307KD
			3117SS (Strbd)	
	3.327"/.020	3117P2 (Port)	3327KD	
		3117S2 (Strbd)		
	3.347"/.040	3117P4 (Port)	3347KD	
		3117S4 (Strbd)		
		Wrist Pin	S488	
		Circlips	CW22	
Suzuki V6 175HP 1987-92	6	3.307"/Std.	3117PS (Port)	3307KD
			3117SS (Strbd)	
	3.327"/.020	3117P2 (Port)	3327KD	
		3117S2 (Strbd)		
	3.347"/.040	3117P4 (Port)	3347KD	
		3117S4 (Strbd)		
		Wrist Pin	S488	
		Circlips	CW22	
Suzuki V6 200HP 1981-93	6	3.307"/Std.	3117PS (Port)	3307KD
			3117SS (Strbd)	
	3.327"/.020	3117P2 (Port)	3327KD	
		3117S2 (Strbd)		
	3.347"/.040	3117P4 (Port)	3347KD	
		3117S4 (Strbd)		
		Wrist Pin	S488	
		Circlips	CW22	
Suzuki V6 200HP EFI 1994-00	6	3.307"/Std.	3186PS (Port)	3307KD
			3186SS (Strbd)	
	3.327"/.020	3186P2 (Port)	3327KD	
		3186S2 (Strbd)		
	3.337"/.030	3186P3 (Port)	3332KD	
		3186S3 (Strbd)		
3.347"/.040	3186P4 (Port)	3347KD		
	3186S4 (Strbd)			
		Wrist Pin	S488	
		Circlips	CW22	
Suzuki V6 225HP EFI 1987-03	6	3.307"/Std.	3187PS (Port)	3307KD
			3187SS (Strbd)	
	3.327"/.020	3187P2 (Port)	3327KD	
		3187S2 (Strbd)		
	3.337"/.030	3187P3 (Port)	3332KD	
		3187S3 (Strbd)		
3.347"/.040	3187P4 (Port)	3347KD		
	3187S4 (Strbd)			
		Wrist Pin	S488	
		Circlips	CW22	



Suzuki Carburetor Kits

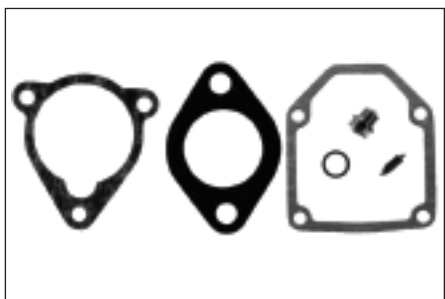
Picture Gallery



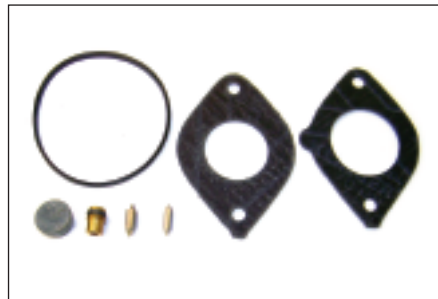
Part No. 18-7752
OE No. 13910-87D00



Part No. 18-7753
OE No. 13910-94400



Part No. 18-7754
OE No. 13910-94701



Part No. 18-7755
OE No. 13910-95D00

Applicaton Chart

Model/HP	Serial No./Year	Carb. Kit with float
DT25C	1989-98	18-7755
DT30C	1988-97	18-7755
DT40C	1984-98	18-7753
DT55	1985-97	18-7754
DT65	1985-97	18-7753
DT75	1985-97	18-7754
DT85	1985-98	18-7753
DT90	1989-97	18-7752
DT100	1989-98	18-7752
DT115	1986-98	18-7754
DT140	1986-98	18-7753
V-6	ALL	18-7752



Model	Year	Part No.
DT8		423
DT9.9 (2 petal)		422
DT9.9 (3 petal)		423
DT15	1988	423
DT25	1988-up	432
DT25	1995	433
DT30	1986	423P
DT30	1988-UP	432
DT30	1995	433
DT40	1989	423P
DT40	1995	428
DT50		428
DT60		428
Funjet		428
Webbike		428
DT55	1986-91	433
DT55		438

Model	Year	Part No.
DT65	1986-91	433
DT65		438
DT75	1983-95	438
DT85	1979-95	438
DT90		443
DT100		443
DT100SF		443
DT115		444
DT140		444
DT150		464
DT150 SUPER SIX	1986-87	464
ADT150 SUPER SIX		464
DT150 EFI		466
DT175		464
DT200		464
DT200 EXANTE		464
DT225		466

Suzuki Fuel Filters



Water Fuel Separator with Bracket

Part No. 600-402

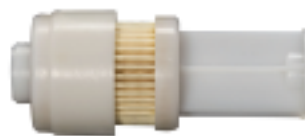
Fits: Mercury, Yamaha, Honda, Suzuki Merc Cruiser Standard Canister, 1/4" npt



Water Fuel Separator with Bracket

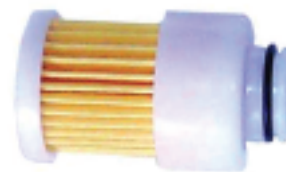
Part No. 600-404

Fits: Mercury, Yamaha, Honda, Suzuki Merc Cruiser Standard Canister, 3/8" npt



Part No. 600-290

Replaces OE
No. 65L-24563-00-00



Part No. 600-295

Replaces OE
No. 68V-24563-00-00

Suzuki Starter



S1071M

Replacement Starter for Suzuki 40 HP and Various Other Engines Replaces O.E.
No. S108-94, S108-112



Suzuki Spark Plugs



Part No.

SUZUKI

BKR6E
BR8HS-10
B8HS-10
B8HS
BR8HS
DCPR6E
BR7HS-10
B7HS-10



Suzuki Trim Motors



Suzuki 2 Wire 4 Bolt
O.E. No.: 38100-94900-OED
Part No. 330-500



Suzuki V4/V6 1986-1990 3 Wire 3 Bolt
O.E. No.: 38100-87E10-OED
Part No. 330-505



Suzuki V4/V6 1990-2003
O.E. No.: 38100-92EOO-OED
Part No. 330-515

Suzuki CDI Electronics

SUZUKI OUTBOARD IGNITIONS



158-9501 Rectifier
Replaces: 32800-95720 32800-95D00
32800-95D01



178-9550 Stator 3 Cyl
CALL FOR AVAILABILITY
Fits 1983-1985 DT75 and 1979-1987 DT85
Replaces: 32100-95500 32101-95500



178-9450 Stator 4 Cyl
CALL FOR AVAILABILITY
Fits 1981-1985 DT115 and DT140
Replaces: 32100-94500 32101-95500

SUZUKI OUTBOARD IGNITIONS



118-5320 CD Module 2 Cyl Engine
Replaces: 32900-95320

PRESSURE & VACUUM TESTER / GEARCASE FILLER



995-120 10mm Suzuki Adapter



HP	Year	Impeller	Service Kit
DT4	84-98	18-3097	18-3260
DT5	77-83	18-3097	18-3260
DT6	84-02	18-3097	18-3259
DT8	86-97	18-3097	18-3259
DT8C/9.9C	89-97	18-3000	18-3255
DT9.9	77-82	18-3092	
DT9.9	83-87	18-3099	
DF9.9	97-04	18-3099	18-3256
DF9.9/15	96-04	18-3099	18-3256
DT14	77-80	18-3092	
DT15	83-88	18-3099	18-3256
DT15C	89-97	18-3099	18-3256
DF15	97-04	18-3099	18-3256
DT16	77-82	18-3092	
DT20	86-88	18-3096	18-3242
DT25	80-82	18-3096	
DT25	83-88	18-3096	18-3242
DT30	83-87	18-3096	18-3242
DT30C	88-95	18-3096	18-3242
DT35	80-82	18-3094	
DT35	87-89	18-3096	18-3242
DT40	80-83	18-3094	
DT40/DT40C	84-98	18-3096	18-3242
PU40 (JET)	89-94	18-3096	
DT50	THRU 82	18-3094	
DT50	1983	18-3094	
DT50	1984	18-3095	
DT50M	80-84	18-3094	
DT55	85-97	18-3094	18-3243
PU55 (JET)	89-94	18-3094	
DT60	1983	18-3094	
DT60	1984	18-3095	
DF60	98-01	18-3049	18-3254
DT65	THRU 82	18-3094	
DT65	85-97	18-3096	18-3243
DF70	98-01	18-3049	18-3254
DT75	83-00	18-3095	18-3244
DT85	80-97	18-3095	18-3244
PU85 (JET)	89-97	18-3095	
DF/DT90	89-01	18-3049	18-3254
DF90	2001-04	18-3023	18-3258
DF/DT100	89-01	18-3049	18-3254
DT115	81-01	18-3023	18-3257
DF115	2001-04	18-3023	18-3258
DT140	81-01	18-3023	18-3257
DF140	2001-04	18-3023	18-3257
DT150	86-01	18-3023	
DT200	86-00	18-3023	
150-225 HP V6	86-03	18-3023	18-3253



New York • 1-800-222-3375

631-244-8060 • fax 631-244-0556

61 Floyd Run, Bohemia, NY 11716

 e-mail: info@wsmparts.com • www.wsmparts.com

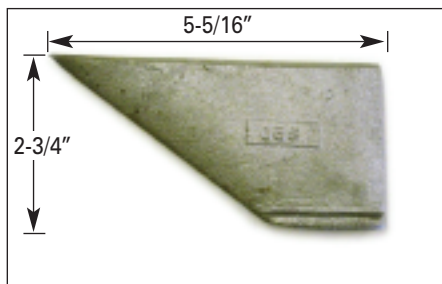

Puerto Rico

787-832-2499 • fax 787-832-2939

234 Balboa St., Mayaguez, Puerto Rico 00681-2605

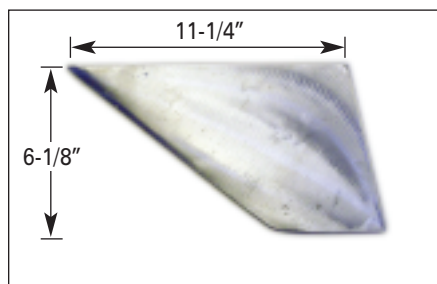


Suzuki Outboard Skegs



9.9, 15 H.P.

Part No. SK20



150 H.P. & up (Swept Back)

Part No. SK25

Suzuki Lower Unit Seal Kits

HP	Year	Part No.
DT25C	1989-98	18-8341
DT30C	1988-97	18-8341
DT40C	1984-98	18-8337
DT55	1985-97	18-8339
DT65	1985-97	18-8339
DT75	1985-97	18-8340
DT85	1985-98	18-8340
DT90	1989-97	18-8336
DF90/115	All	18-8373
DT100	1989-98	18-8336
DF140	All	18-8374

Suzuki Lower Unit Grease Nuts

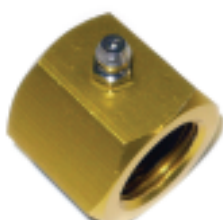


CABLE GREASE NUT

Part No. 986-500

1" x 14 Pitch Thread

Built in Grease seal with easy steer nuts, it lubricates and seals out moisture and salt water. Extends cable life the inexpensive way. Easy installation. Fits Merc, Mariner, OMC, Yamaha, Suzuki Chrysler/Force and Nissan. Anodized. (Fits Most Mercs)



CABLE GREASE NUT

Part No. 986-505

7/8" x 14 Pitch Thread
(Fits All Others)

CABLE NUT FOR CABLE SIDE

Part No. 986-510

7/8" X 14 Pitch Threads I.D. or O.D.
This nut injects oil directly onto cable.
FITS ALL OUTBOARDS